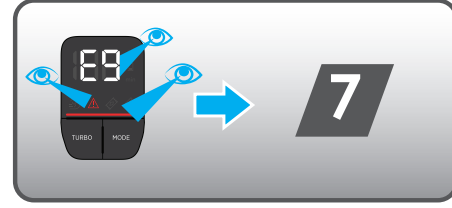
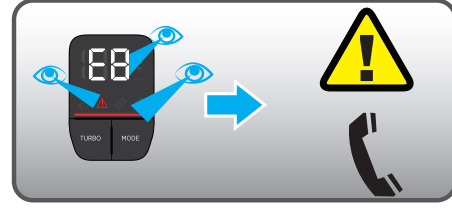
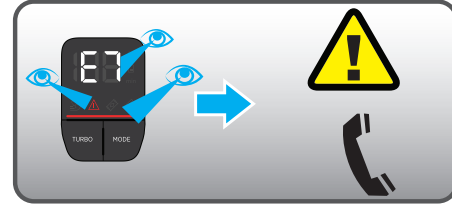
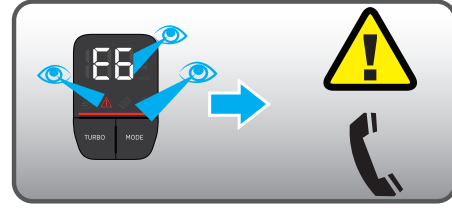
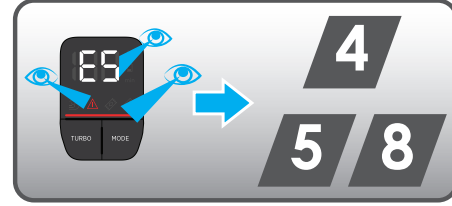
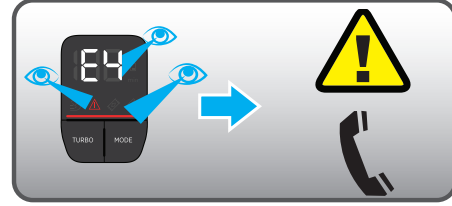
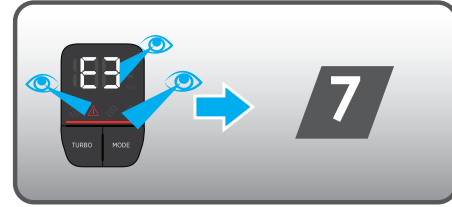
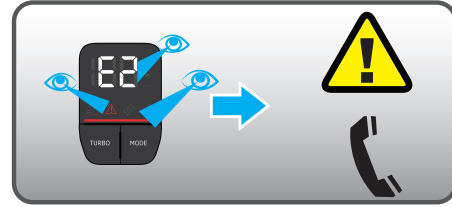
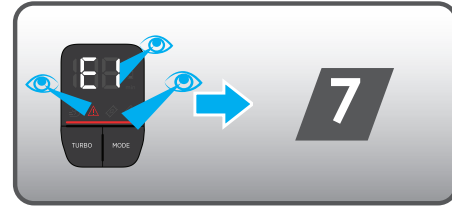
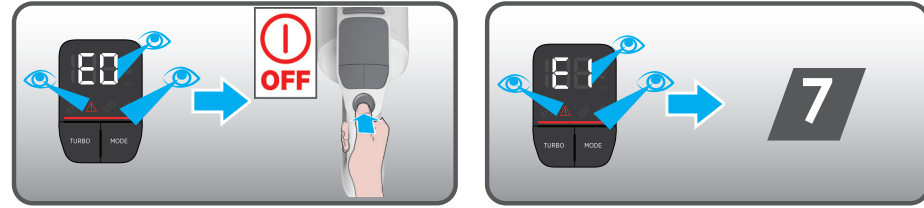
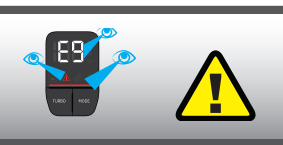
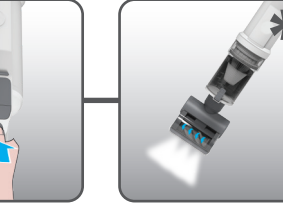
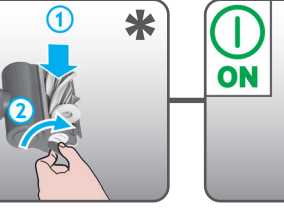
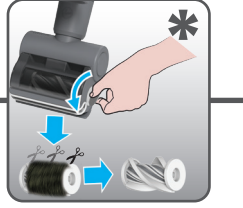
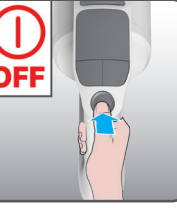
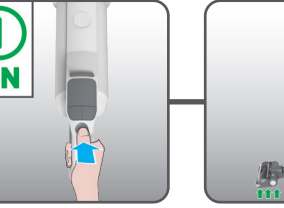
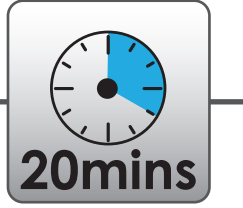
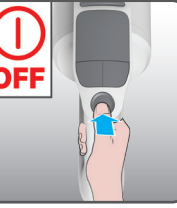
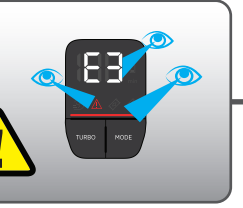
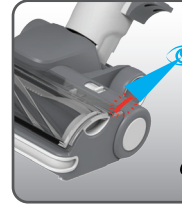
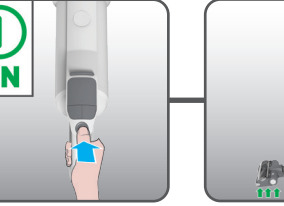
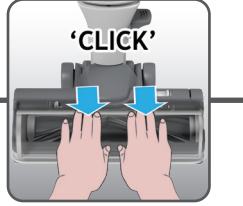
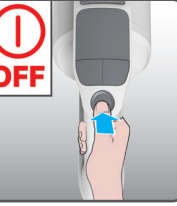
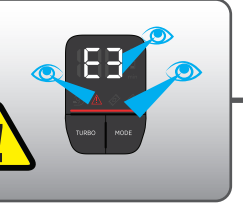
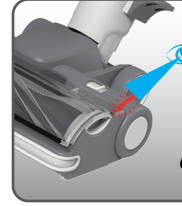
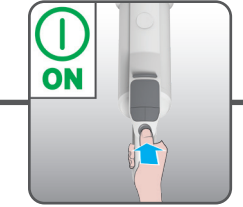
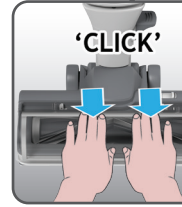
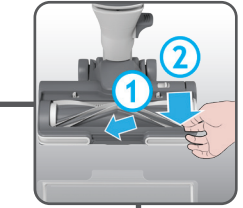
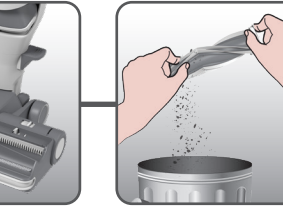
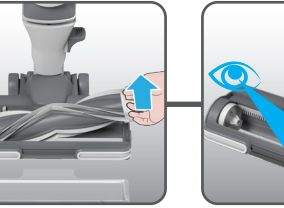
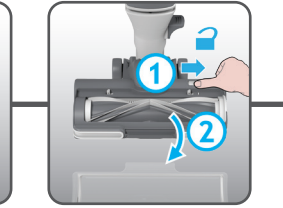
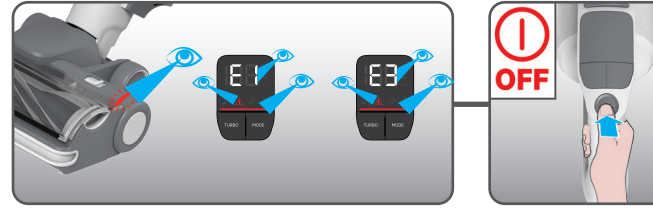
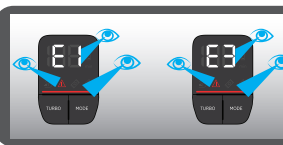


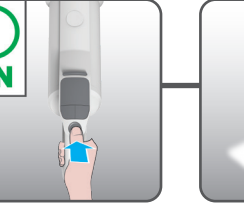
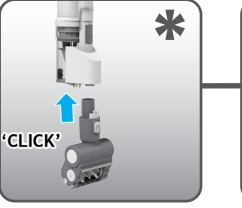
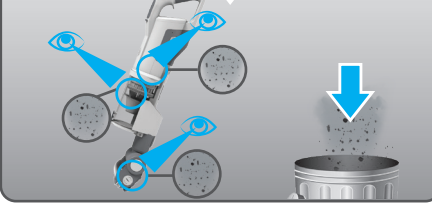
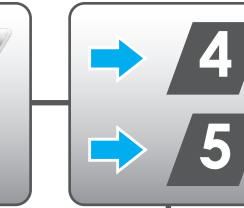
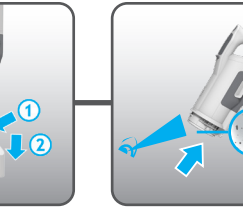
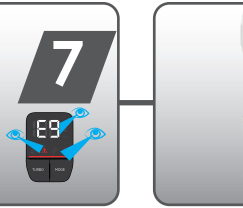
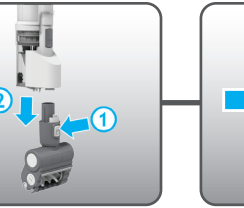
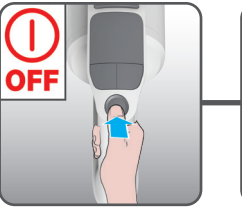
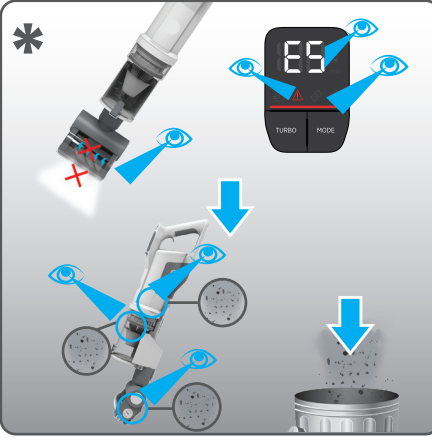
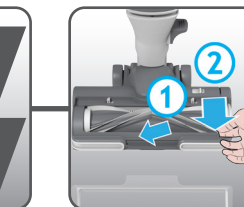
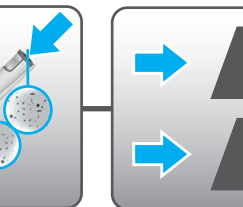
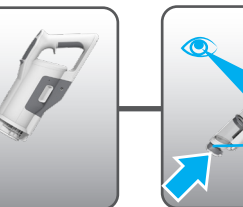
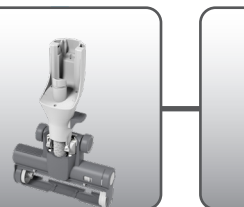
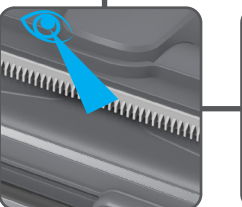
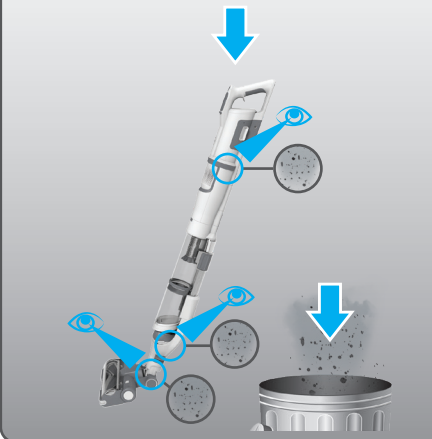
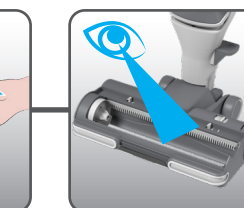
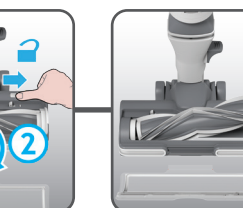
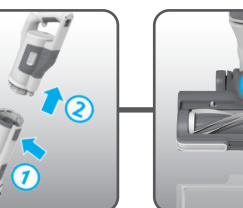
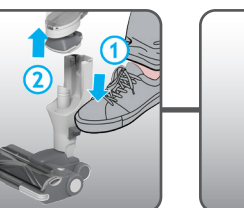
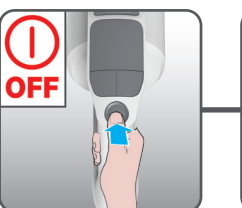
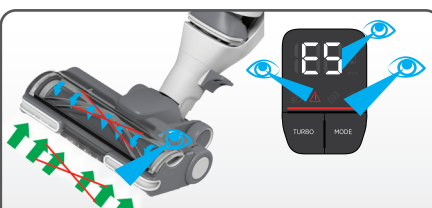
6



7



8



PRINTED IN P.R.C. Part No. : 48700623



GB User Manual
 FR Guide de l'utilisateur
 DE Bedienungsanleitung
 IT Manuale d'uso
 NL Gebruikershandleiding
 PT Manual de Instruções
 ES Guía del usuario
 DK Brugervejledning
 NO Bruksanvisning
 SE Instruktionsmanual
 FI Käyttöohje
 GR Οδηγίες Χρήσεως
 RU Руководство пользователя

PL Instrukcja Obsługi
 CZ Návod k obsluze
 SI Navodila Za Uporabo
 TR Kullanım Kılavuzu
 SK Návod na obsluhu

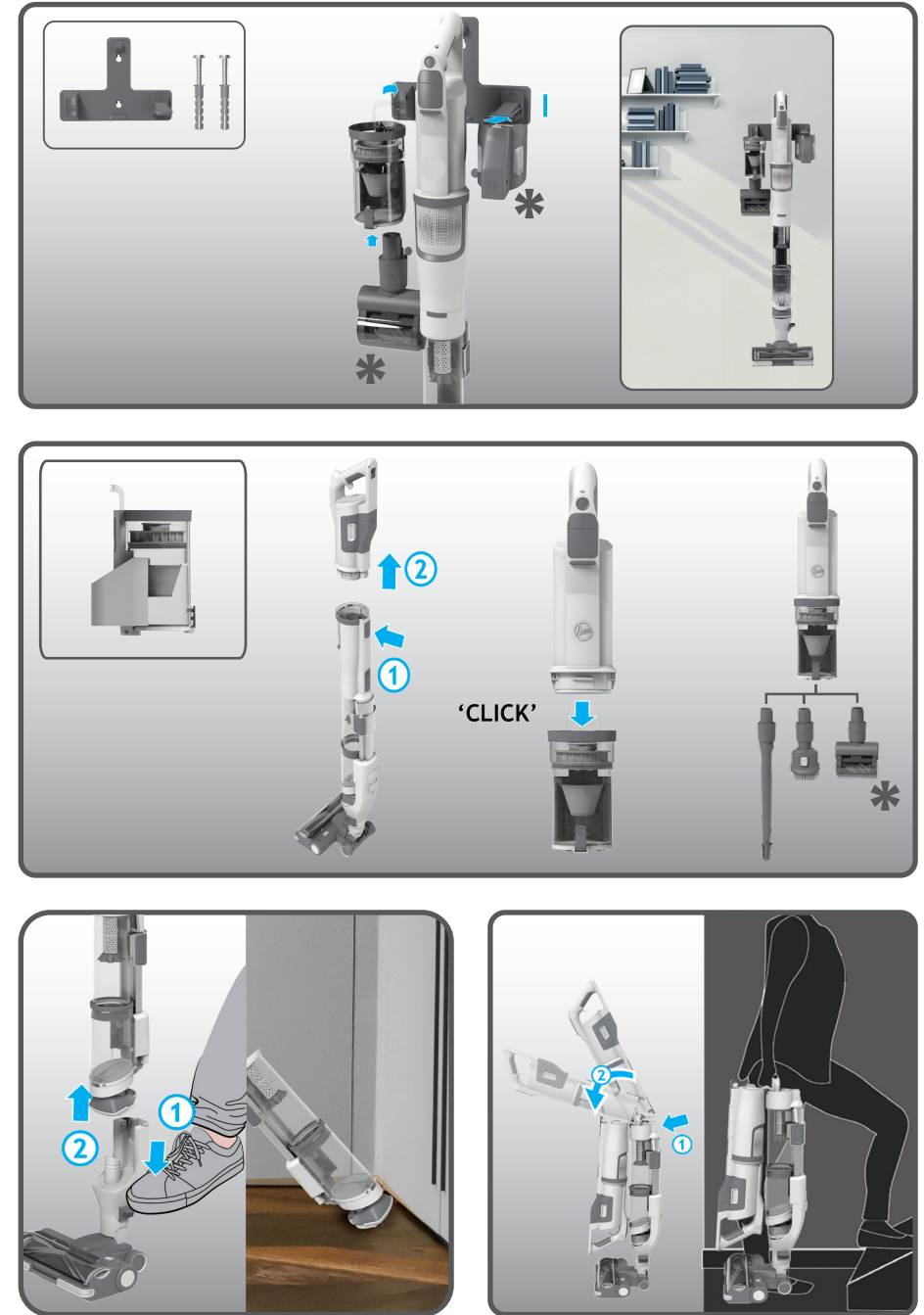
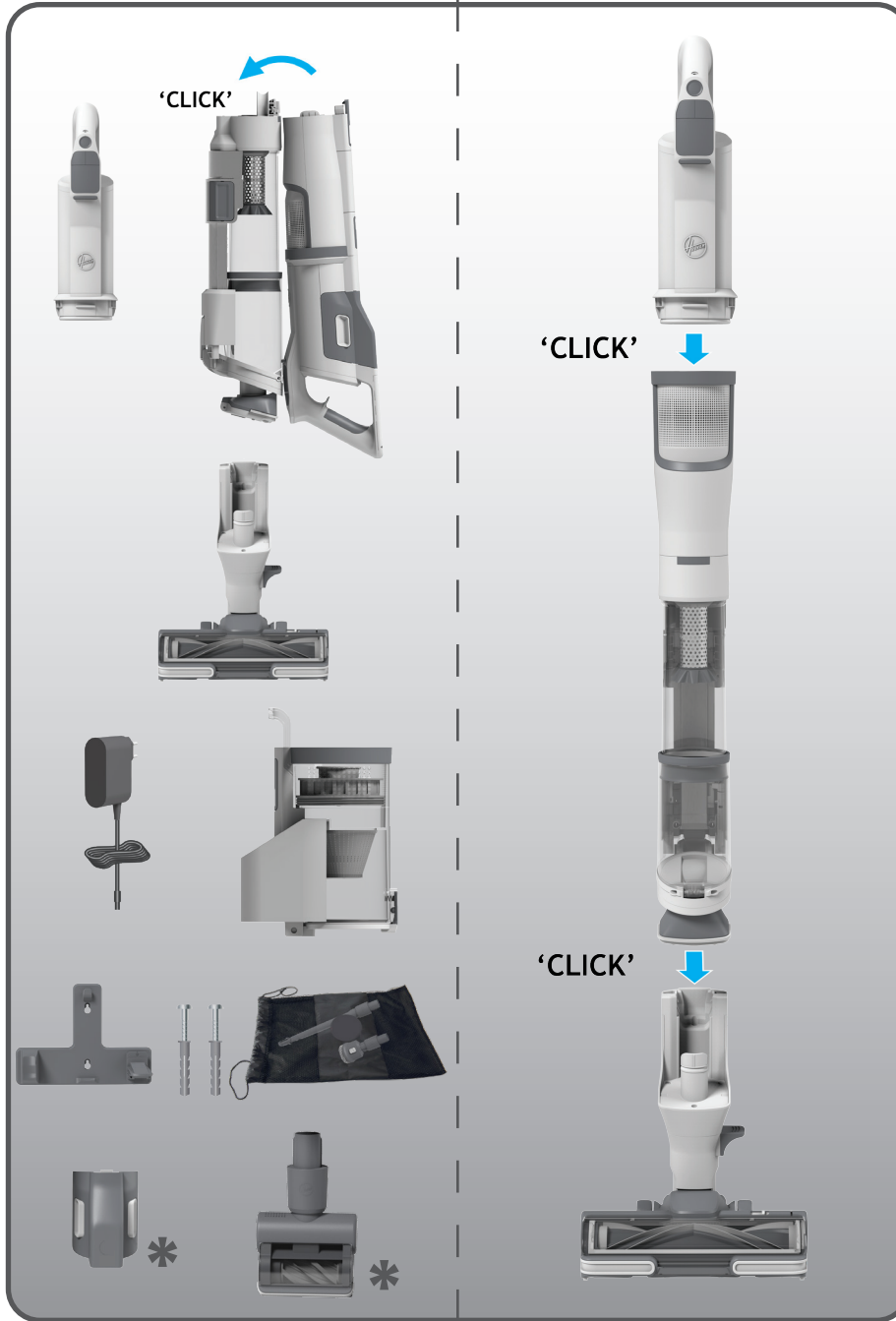


APPLY MANUAL LABEL HERE

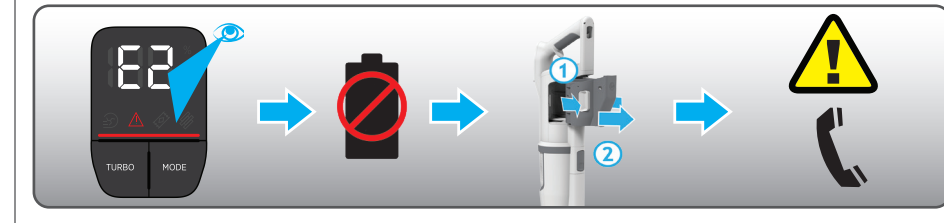
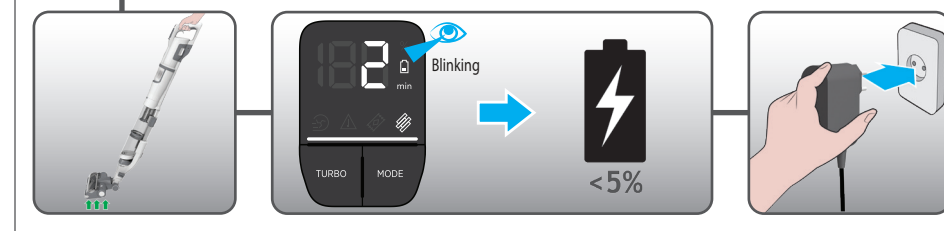
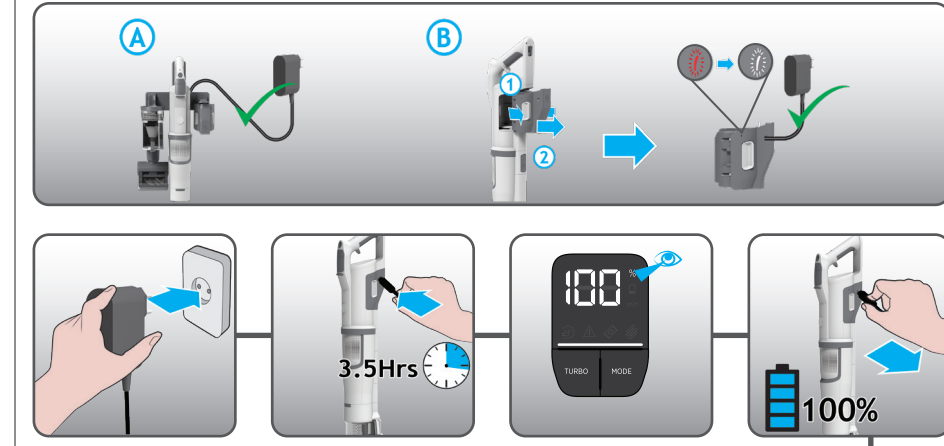
GB - Please read the 'Instructions for Safe Use and Fittings' booklet before using your product. FR - Veuillez lire le paragraphe « Instructions De Sécurité D'utilisation Et De Raccordement » avant d'utiliser votre produit. DE - Bitte lesen Sie vor dem Gebrauch des Geräts aufmerksam die „Bedienungsanleitung zur sicheren Benutzung“. IT - Leggere con attenzione il libretto "istruzioni Per Un Uso Sicuro E Per Il Montaggio Degli Accessori Opzionali" prima di utilizzare il prodotto. NL - Lees 'Instructies Voor Veilig Gebruik En Aansluitingen' voor u het produkt in gebruik neemt. PT - Por favor leia o manual "instruções Para Utilização E Instalação Seguras" antes de começar a usar o produto. ES - Por favor lea las "instrucciones Para Un Uso Seguro Y Para El Montaje" antes de utilizar el producto. DK - Læs venligst vejledningen "instruktioner For Sikker Brug Og Samling", inden du tager produktet i brug. NO - Vennligst les veiledningen "instruksjoner For Sikker Bruk Og Montering" før du bruker produktet. SE - Var vänlig läs "Instruktioner för säker användning" innan ni använder denna produkt. FI - Tutustu ennen tuotteen käyttöä "lisävarusteiden Turvallisen Käytön Ja Asennuksen Ohjeet" ohjeeseen. GR - Παρακαλώ διαβάστε την ενότητα 'Οδηγίες Ασφαλούς Χρήσεως Και Εξαρτημάτων' στο Βιβλίο οδηγιών, πριν χρησιμοποιήσετε το προϊόν. RU - Перед использованием прибора необходимо ознакомиться с «Инструкция По Безопасному Использованию И Применению». PL - Przed użyciem produktu, proszę zapoznać się z Instrukcją Bezpiecznego Użytkowania I Akcesoriów. CZ - Před použitím výrobku si důkladně přečtěte a dodržujte pokyny v brožurě "návod K Bezpečnému Použití A Upevnění". SI - Prosim Preberite Navodila Za Varo Uporabo In Sestavo Dodatnih Pripomočkov. TR - Lütfen ürünü kullanmadan önce kullanma kılavuzundaki 'güvenli Kullanım Ve Donanım' bölümünü okuyunuz. SK - Pred použitím výrobku si dôkladne prečítajte a dodržujte pokyny v brožúre "Pokyny pre bezpečné použitie".



1

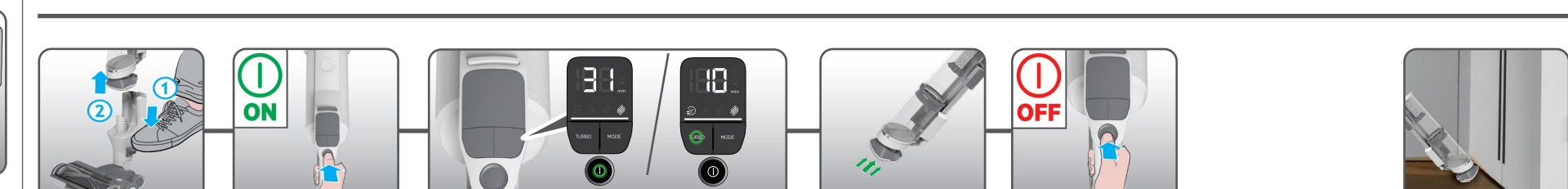


2

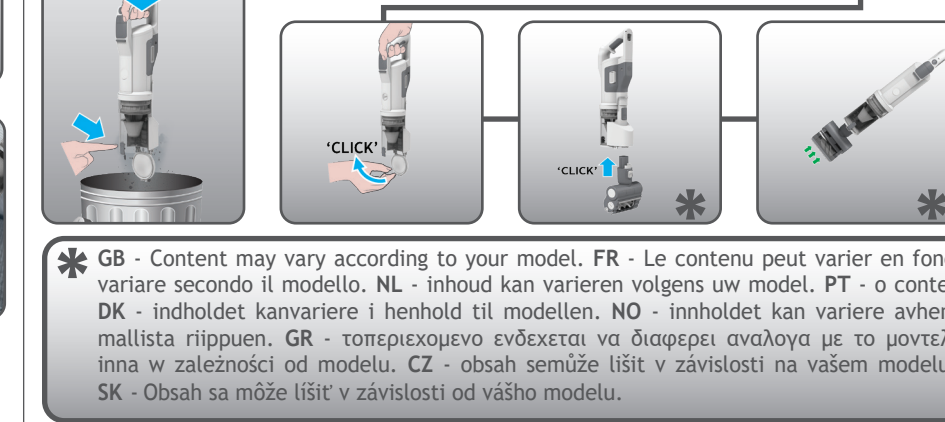
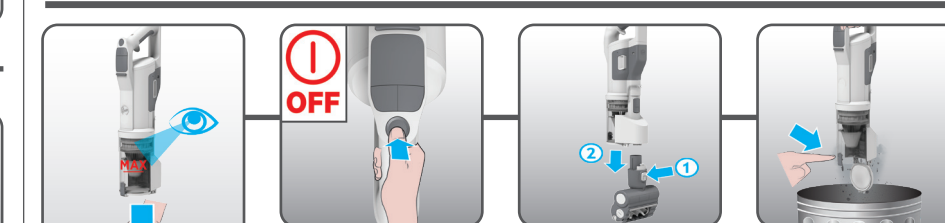
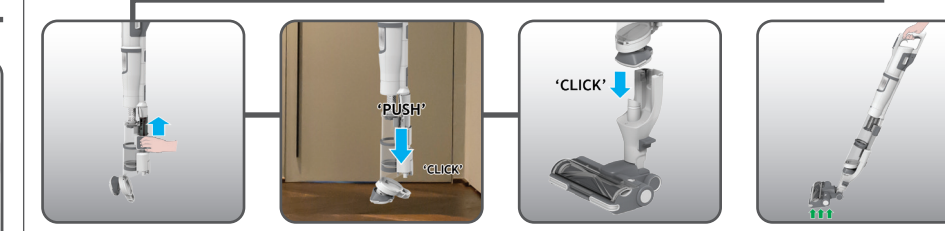
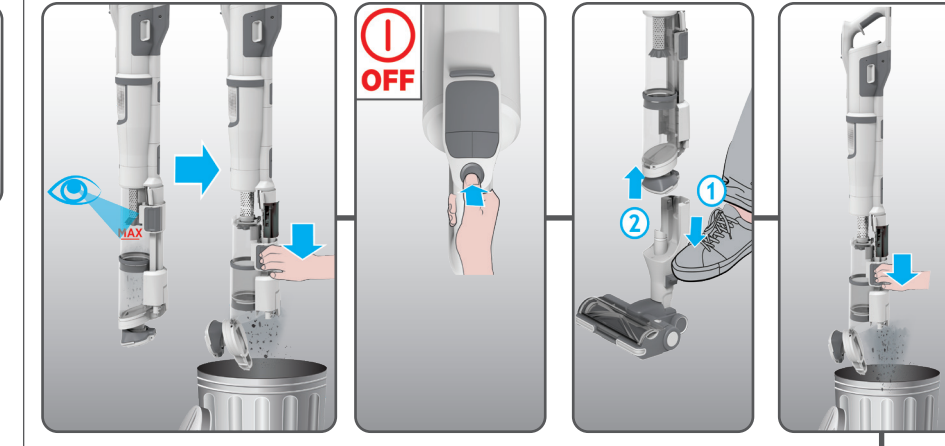


* GB - Content may vary according to your model. FR - Le contenu peut varier en fonction de votre modèle. DE - der inhalt kann je nach modell variieren. IT - I contenuti possono variare secondo il modello. NL - inhoud kan variëren volgens uw model. PT - o conteúdo pode variar de acordo com o modelo. ES - el contenido puede variar en base a su modelo. DK - indholdet kan variere i henhold til modellen. NO - innholdet kan variere avhengig av modellen. SE - innehåll kan variera beroende på modell. FI - sisältö saattaa vaihdella mallista riippuen. GR - το περιεχόμενο ενδέχεται να διαφέρει αναλόγα με το μοντέλο. RU - содержимое может меняться в зависимости от модели. PL - zawartość może być inna w zależności od modelu. CZ - obsah semůže lišit v závislosti na vašem modelu. SI - obsah sa može lišit v závislosti od modelu. TR - içerik modelinize göre farklılık gösterebilir.

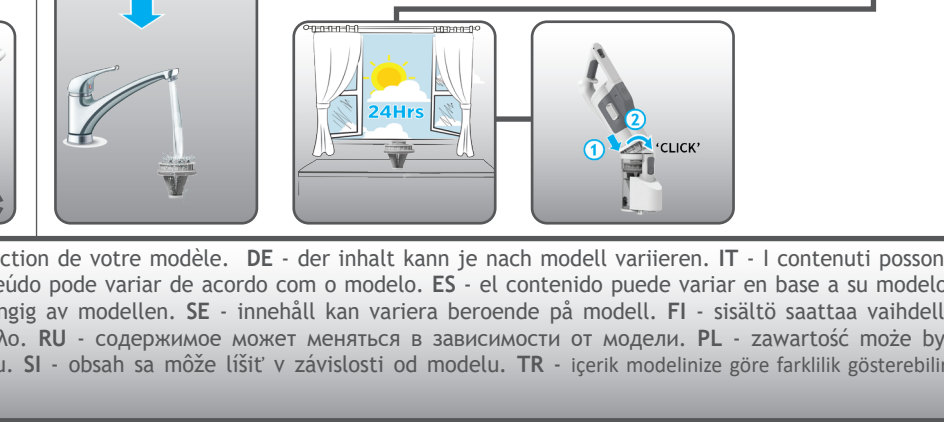
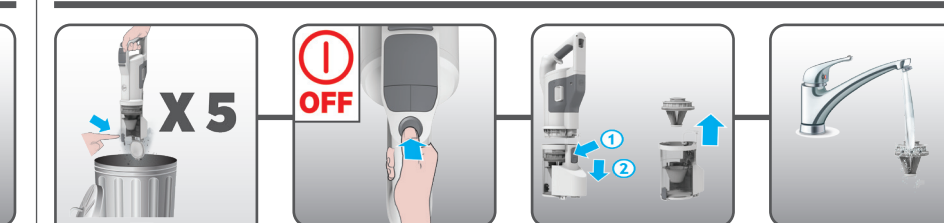
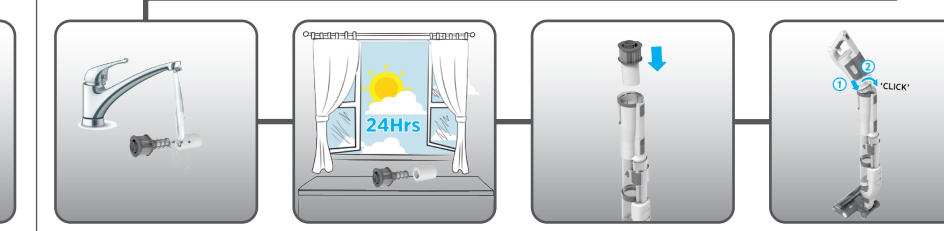
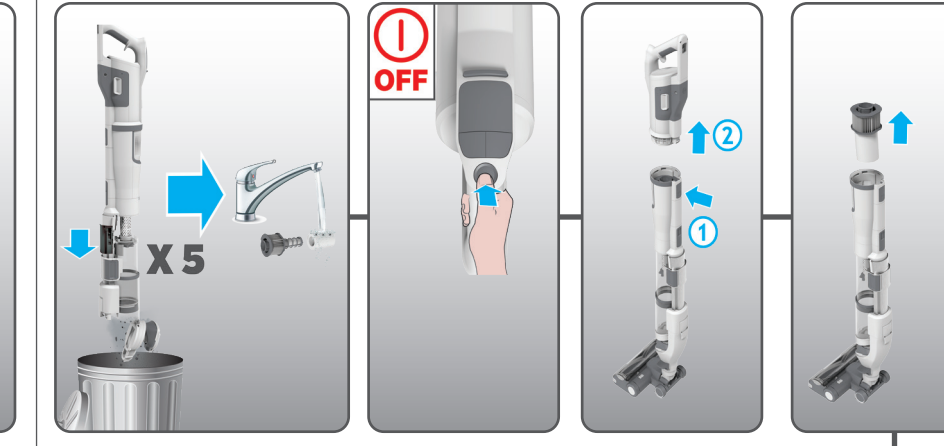
3



4



5



* GB - Content may vary according to your model. FR - Le contenu peut varier en fonction de votre modèle. DE - der inhalt kann je nach modell variieren. IT - I contenuti possono variare secondo il modello. NL - inhoud kan variëren volgens uw model. PT - o conteúdo pode variar de acordo com o modelo. ES - el contenido puede variar en base a su modelo. DK - indholdet kan variere i henhold til modellen. NO - innholdet kan variere avhengig av modellen. SE - innehåll kan variera beroende på modell. FI - sisältö saattaa vaihdella mallista riippuen. GR - το περιεχόμενο ενδέχεται να διαφέρει αναλόγα με το μοντέλο. RU - содержимое может меняться в зависимости от модели. PL - zawartość może być inna w zależności od modelu. CZ - obsah semůže lišit v závislosti na vašem modelu. SI - obsah sa može lišit v závislosti od modelu. TR - içerik modelinize göre farklılık gösterebilir. SK - obsah sa môže lišit v závislosti od vášho modelu.