



BEOSOUND EXPLORE

THE MOST DESIRABLE DURABLE OUTDOOR SPEAKER IN THE WORLD

- Class leading sound performance with heavy bass for its size
- Stereo pairable with other Explores
- The most durable outdoor speaker Bang & Olufsen has ever made
- Robust construction with scratch resistant 'Type II' anodisation
- Fully certified dustproof and fully waterproof
- Innately versatile with integrated strap and carabiner
- The lightest, most grabbable Bang & Olufsen speaker
- Class leading battery performance - up to 27 hours



Colours

- Black Anthracite
- Green
- Grey Mist



TUNED TO SOUND GREAT EVERYWHERE

Bang & Olufsen DNA is at the heart of Beosound Explore. It is not tuned to sound the loudest, it is tuned to sound the best.

The dual 1.8" full range drivers deliver a huge musical punch and depth of talent for such a small speaker.

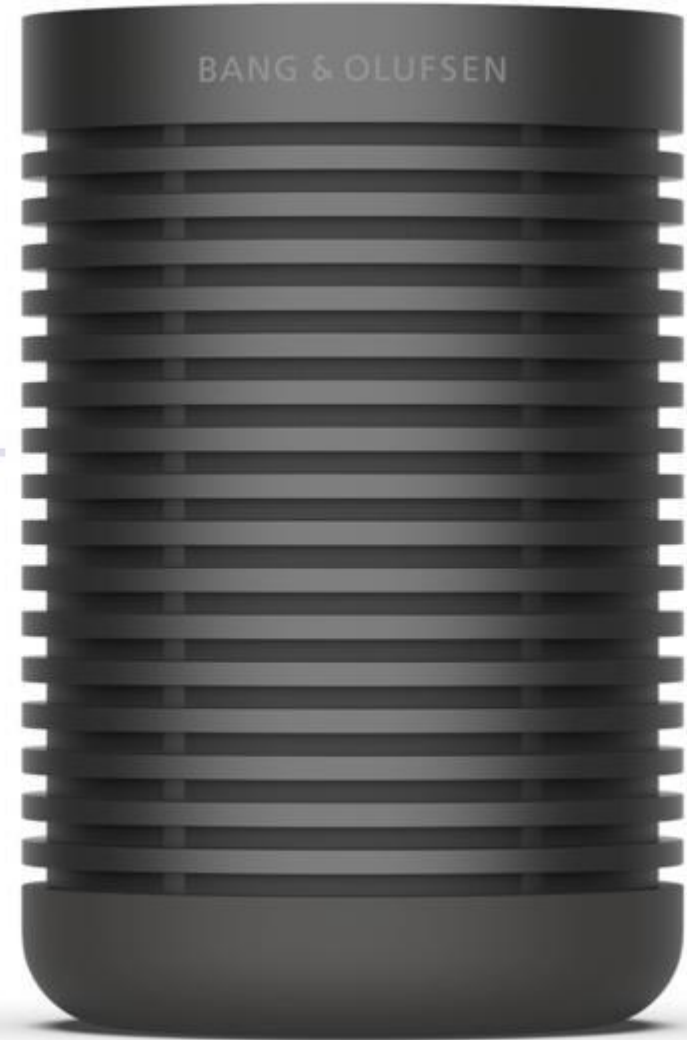
Focus has been given to outdoor performance and supreme bass – Explore delivers 59dB in bass capability compared to just 46dB for the outgoing P2 and approaches the 62dB of A1 2nd Generation.



AND LOOK NEWER FOR LONGER

Explore is the first speaker to market to feature Type 2 anodised aluminium.

This makes the material much more scratch and wear resistant than aluminium treated in traditional ways, meaning Explore will look newer for longer and not be damaged as easily should you for example put the speaker in your bag with your keys.



AND PLACE ANYWHERE



Explore features a changeable flexible strap meaning it can be hung in many different manners and in many different environments.

Whats more, Explore is the first Bang & Olufsen product to also feature an integrated carabiner, allowing for tighter hanging options for example on a rucksack for long hikes.

With True360 degree omnidirectional sound, Explore will perform great no matter how its placed making it a versatile companion both around the home and the campfire.

ENGINEERED TO NEVER LET YOU DOWN

It is likely that Explore will be used often in environments that do not provide easy access to power.

Therefore strong battery life is an essential requirement.

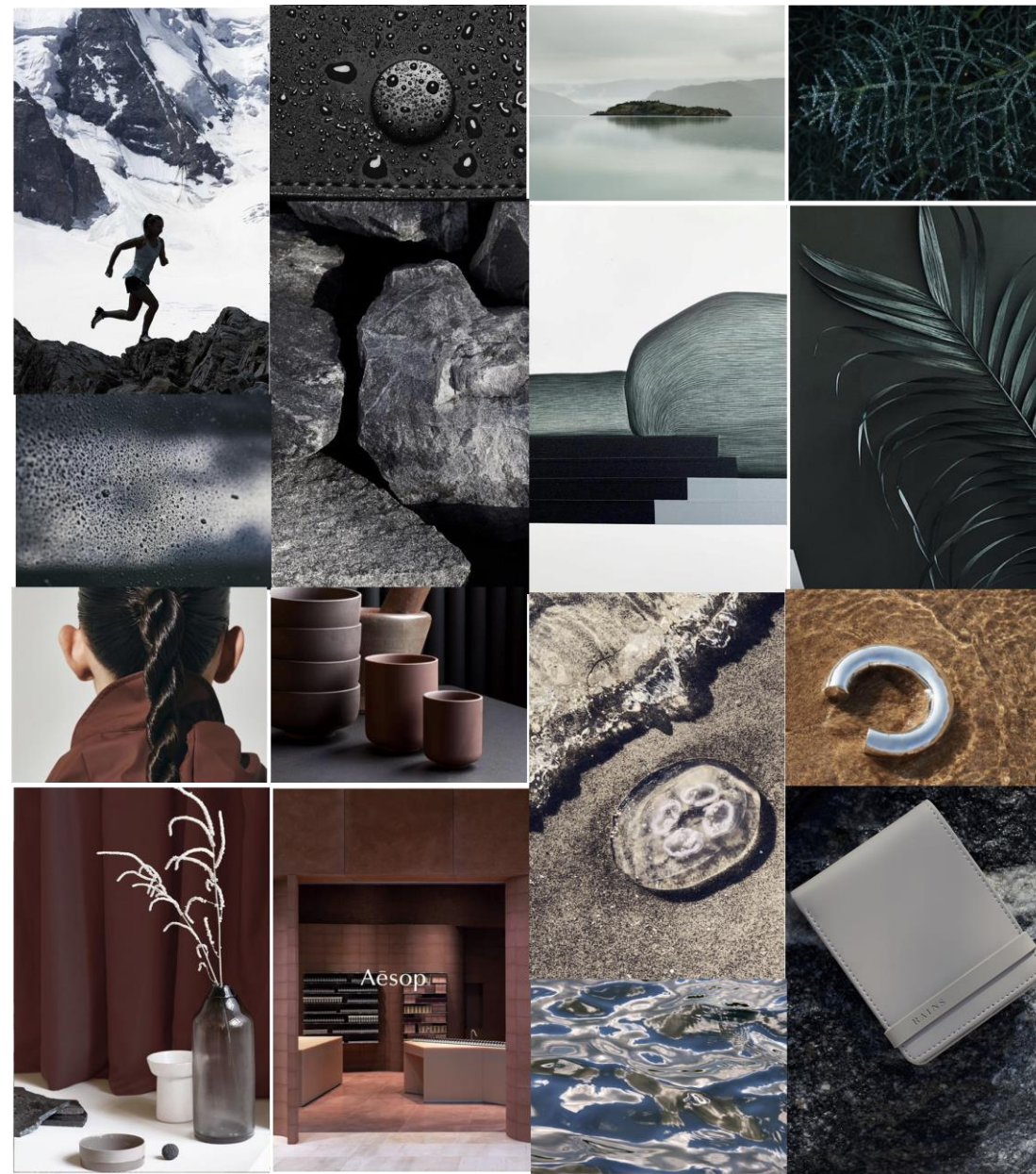
Explore deliver class leading battery life up to 27 hours at typical listening volumes.



NATURALLY COLOURED



Inspired by scandinavian landscapes.
Forests, glaciers, fjords. From micro to macro.





TECHNICAL SPECIFICATIONS

TECHNICAL SPECIFICATIONS (1 OF 2)

Sound Parameters

RECOMMENDED ROOM SIZE	5-30 m ² 50-300 ft ² room
IDEAL FOR	Small Social Gatherings When Travelling, Extreme Outdoor Adventures And Smaller Rooms Around The Home
SPEAKER CONFIGURATION	2 x 1.8" Full Range Drivers
AMPLIFIER	2 x 30 W Class D For Full Range
SOUND DIRECTION	360 Degrees
CABINET PRINCIPLE	Closed Box
FREQUENCY RANGE	56-22.700 Hz
MAX LOUDNESS @ 1M (SPL)	91dB
BASS CAPABILITY @ 1m (SPL)	59dB
WIRELESS CODEC	SBC
STEREO PAIRING	Yes (Between 2 Beosound Explores Only)
MULTICONNECT	No
MULTIPOINT	Yes (Up To Two Devices)
CUSTOMISABLE SOUND EQ	Yes. Five Presets Available And Fully Customisable

Design Parameters

DESIGNER	Above
MATERIALS	Fabric, Plastic, Type II Anodised Aluminium
IP CERTIFICATION	IP67
DIMENSIONS (W x H x D) (mm)	81 W x 124 H x 81 D
WEIGHT (g)	631 Without Carabiner / 637 With Carabiner

Battery Parameters

BATTERY PLAYTIME AT LOW LISTENING VOLUMES (55dB)	Up To 33 Hours 45 Minutes
BATTERY PLAYTIME AT TYPICAL LISTENING VOLUMES (70dB)	Up To 27 Hours 13 Minutes
BATTERY PLAYTIME AT MAX LISTENING VOLUMES	Up To 3 Hours 23 Minutes
BATTERY SIZE (mAh)	2.400
POWER CONSUMPTION	Typical: 6.2W, Standby: 0.19W
POWER SUPPLY	5V DC / 3A Via USB-C Connector
CHARGING TIME	2 hours At 5v - 2A/3A Charging
FUEL GAUGE	Yes
CHARGE OUT	No
PLUG LOCALISATIONS	N/A

TECHNICAL SPECIFICATIONS (2 OF 2)

Connectivity Parameters

BLUETOOTH VERSION	5.2
WIFI	No
USB INPUTS / OUTPUTS	USB-C For Charging And Streaming
ON DEVICE CONTROLS	Power, Bluetooth Connect, Play / Pause, Vol Up, Vol Down
NFC CAPABILITY	No
SPEAKERPHONE	No
VOICE ASSISTANT INTEGRATION	No
APPLE FAST PAIR (MFI)	Yes
GOOGLE FAST PAIR	Yes
MICROSOFT SWIFT PAIR	Yes

Miscellaneous

OPERATING CONDITIONS	Temperature: 0 - 40 degrees, Humidity: 30 - 95%
WARRANTY	2 Years

Packaging

COLOURS	Black Anthracite, Green, Grey Mist
INDICATORS	Battery / Product LED
INCLUDED IN THE PACKAGING	Beosound Explore, Quick User Guide, USB-A To USB-C Cable
ACCESSORIES	Carabiner, Black Anthracite Carabiner, Green Carabiner, Grey Mist USB-A to USB-C cable, 1,25m, Black
ACCESSORIES AVAILABLE FOR SERVICE	Battery Pack - Lithium-ion Fabric Strap, Black Anthracite Fabric Strap, Green Fabric Strap, Grey Mist Refurbished Packaging (Including Tray)